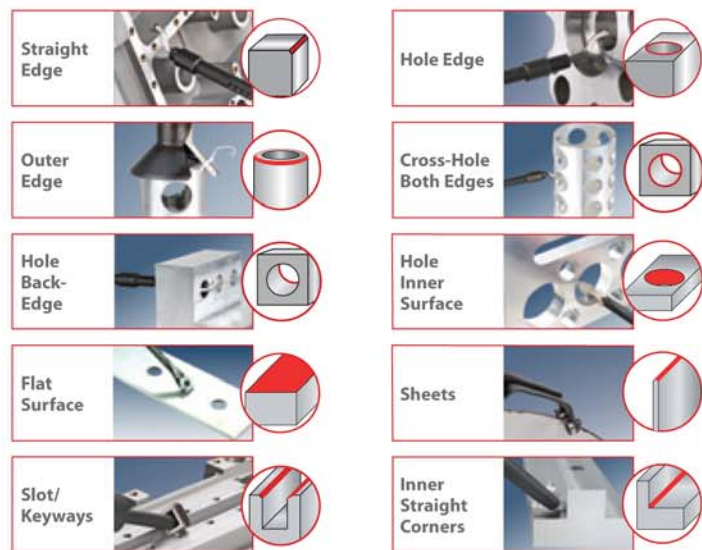


## Blades for the Right Application

Blade Name	EDP Number	Description	Blade (Work Direction Shown)
B10	29012	HSS. Deburs materials with spiral chips. Bulk pack available.	
B10C	29013	Solid carbide, B10 geometry.	
B10L	29095	B10 for left-handed users	
B10P	29015	PVD TIN coated for high resistance to wear. B10 geometry	
B10S	29210	Long-lasting, cobalt-enriched. B10 geometry	
B11	29108	Extra thin, HSS. Deburs holes with min. diameter 0.08" (2mm).	
B20	29019	HSS. Rotates clockwise & counterclockwise	
B20C	29020	Solid carbide. Rotates clockwise & counterclockwise	
B20P	29021	PVD TIN coated for high resistance to wear. Rotates clockwise & counterclockwise	
B25	29022	Thin-nosed. Specially designed for plastics	
B25C	29110	Solid carbide, thin-nosed. Specially designed for abrasive plastics.	
B30	29023	Simultaneously deburs the inside and outside of holes up to 0.16" (4 mm) thick.	
B30P	29024	PVD TIN coated for high resistance to wear. B30 geometry.	
B32	29025	Rotates clockwise & counterclockwise. B30 geometry.	
B50C	29026	Carbide tipped scribe. Can be reground	
B60	29027	HSS. Removes burrs from back edge of holes up to 0.78" (20 mm) thick	
C40	29029	Small, 0.16" (4 mm), triangular HSS scraper for precision work.	
C42	29030	Standard size, 0.31" (8 mm), triangular HSS scraper.	
C50	29117	Double-sided, 0.30" (7.8 mm), triangular scraper	
D80C	29031	Solid carbide, 6 cutting edges. Scrapes surfaces and deburs sheet metal up to 0.12" (3 mm) thick	
E100	29034	Heavy-duty HSS. Deburs materials with spiral chips. Bulk pack available.	
E100C	29035	Wear resistant carbide. E100 geometry.	
E100L	29098	E100 for left-handed users.	
E100P	29037	PVD TIN coated for high resistance to wear. E100 geometry.	
E100S	29211	Long-lasting, cobalt-enriched. E100 geometry.	
E111	29109	Thin-nosed, HSS. Deburs holes with min. diameter 0.06" (1.5 mm).	
E200	29040	HSS for materials with powdery chips. Rotates clockwise & counterclockwise.	
E200P	29099	PVD TIN coated for high resistance to wear. E200 geometry.	

Blade Name	EDP Number	Description	Blade (Work Direction Shown)
E200C	29041	Wear resistant carbide. E200 geometry.	
E250	29106	Specially designed for plastics. Very thin, heavy duty.	
E300	29042	HSS for materials with spiral chips. Simultaneously deburs the inside and outside of holes up to 0.24" (6 mm) thick.	
E300P	29227	PVD TIN coated for high resistance to wear. E300 geometry.	
E350	29044	HSS for materials with powdery chips. Rotates clockwise & counterclockwise.	
E400	29233	Mini triangular scraper.	
E600	29045	HSS. Removes burrs from back-edges of holes up to 0.78" (20 mm) thick.	
F12	29049	Countersink for hole-edges with up to 0.47" (12 mm) diameter.	
F20	29050	Countersink for hole-edges with up to 0.78" (20 mm) diameter.	
F30	29051	Countersink for hole-edges with up to 1.18" (30 mm) diameter.	
F26X	29147	Excellent for external chamfering of pipes, tubes and other items with up to 1.02" (26 mm) diameter.	
G10	29052	HSS. Deburs slots up to 0.6" (15 mm) wide.	
G20	29053	HSS, 4 cutting corners. For slots up to 0.4" (10 mm) wide.	
G30C	29115	Solid carbide, 3 cutting corners. Cleans corners and removes radii after machining for smooth, flush mating of adjoining faces.	
G40C	29103	Carbide, 4 cutting corners. For slots up to 0.4" (10 mm) wide.	
R10	29141	Double-sided, round HSS blade. "A" side deburs materials with spiral chips; "B" side for powdery chips.	
R20	29142	Double-edged, round HSS blade for massive deburring tasks on materials with spiral chips.	
R30	29143	Produces arc-shaped nish on materials up to 0.63" (16 mm) thick. Use a single R30 for one straight edge, or two blades at once to deburr both edges simultaneously.	

## Applications



For additional blades, see the complete SHAVIV catalog at [www.shavivusa.com](http://www.shavivusa.com)

Distributed by:

SHAVIV USA A Division of VNE Corporation  
Main Warehouse  
1149 Barberry Drive, Janesville, WI 53547  
Tel: 1-800-828-8765, 608-756-4930  
Fax: 1-608-741-7125  
sales@varqususa.com

SHAVIV USA  
Technical Support & Marketing  
1243 Naperville Dr., Romeoville, IL 60446  
Tel: 1-815-524-4128  
Fax: 1-815-524-4255  
shavivusa@aol.com